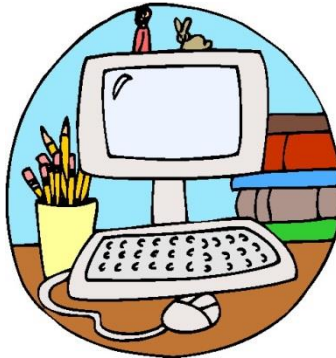


**YANGEBUP  
PRIMARY SCHOOL**



**PRIDE & ACHIEVEMENT**

## **VOLUNTARY CONTRIBUTIONS, CHARGES and PERSONAL ITEMS 2024**



Dear Parents,

The Yangebup Primary School Council has endorsed the schedule of Contributions, Personal items and Additional Costs for 2024. The schedule is broken into three sections which will allow you to ascertain costs for the year. Payment plans are available if required.

Payment of Voluntary Contributions can be incorporated in your booklist charge on the day of the booklist collection, **Thursday 25th January** 2024 between 8.30am – 9.30am in the Undercover Area.

**OR**

Paid directly at the school office via cheque or cash. Sorry **No eftpos facilities available at School**. Payment Plans and Direct Debit details available on request.

**All Voluntary Contributions should be paid by 15th March 2024**

## Voluntary Contributions and Other Charges 2024

### Definition

#### 1. CONTRIBUTIONS

The total amount of voluntary contributions parents and carers are being asked to pay has been contained within the \$60 maximum set in the School Education Act and Regulations 2000.

Contributions are voluntary; however the quality of our teaching and learning programs will be maximized when each family makes a contribution to supplement funding gained from other sources, including the State and Commonwealth Governments.

Contributions collected at this school contribute to items for each student including:

- Reading Books
- Library Books
- Art/Craft Materials
- Maths Resource Materials
- STEAM Materials
- Science Consumables
- HASS Resources
- Physical Education/Sport



#### ADDITIONAL REQUESTS

Chaplain Voluntary Contribution **\$12 per family**



#### 2. OTHER CHARGES

These costs are associated with specific learning activities available to all students, but conditional on a payment being made at the time of the excursion or incursion.



## Maximum School Contributions and Charges per child for 2024

	K	PP	Yr 1	Yr 2	Yr 3	Yr 4	Yr 5	Yr 6
<b>Voluntary School Contribution</b>	\$60	\$60	\$60	\$60	\$60	\$60	\$60	\$60
<b>Additional Requests</b> Chaplain per family	\$12	\$12	\$12	\$12	\$12	\$12	\$12	\$12
<b>Total Voluntary Contributions</b>	\$72	\$72	\$72	\$72	\$72	\$72	\$72	\$72
Your Voluntary Contribution is essential to partially fund the total expenses per student. Other sources of funds to support the budget are the School Grant and, at times, specific P & C contributions through fund-raising efforts.								

<b><u>OTHER CHARGES</u></b>								
	K	PP	Yr 1	Yr 2	Yr 3	Yr 4	Yr 5	Yr 6
Spelling Mastery workbook– if <b>NOT</b> purchased through booklist program					\$31	\$31	\$31	\$31
Class Incursions/Excursions and activities	\$70	\$70	\$70	\$70	\$110	\$110	\$110	\$30
Camps								180
Leadership Day								\$80
Interschool Sports Carnivals					\$35	\$55	\$55	\$55
Interm Swimming Lessons		\$75	\$75	\$75	\$75	\$75	\$75	\$75
Classroom Activities Eg. Cooking, arts & crafts	\$25	\$25	\$15	\$15	\$15	\$15	\$15	\$15
Choir						\$20	\$20	\$20
SIMS Music Program	Selected Yr 5/6 students who play guitar, <b>must provide their own guitar. (Approx \$200+ new)</b>						\$0	\$0
PEAC Courses - from \$10 to \$110 per course	This fee applies only to Yr 5/6 students who have been selected to participate in PEAC						\$300 Max	\$300 Max
Graduation Package								\$35
Graduating Class Shirts (each)								\$48
Please note that the amounts indicated on the schedule represent the maximum that <b>could be</b> charged for scheduled activities in 2024								





### 3. PERSONAL ITEMS

Included with this notice is the list of requirements/booklist items your child will require for personal use in 2024. These personal items are to be supplied by parents.

Supplies can be purchased through the suggested supplier or a supplier of your own choice. **Please be aware that *Campion Education* rebate is approximately 20% of booklist collections back to the school.**

If you wish *Campion Education* to supply your child's requirements please order **ONLINE by Friday 8 December 2023**. (Payment not required at this stage for orders being picked up at school on 25 January 2024. Home deliveries will require payment at time of order). Late orders can be made online but will incur a late fee.

Collection day for Pre Ordered Booklists/Stationery will be on **Thursday 25<sup>th</sup> January 2024 between 8.30am – 9.30am** in the Undercover Area.

Payment will be necessary upon collection via credit/debit card facility supplied by *Campion Education*. **(No CASH or cheques can be accepted on the day).**

If you are unable to collect your Pre Ordered Booklists/Stationery items on **Friday 25<sup>th</sup> January 2024**, they will be available for collection from *Campion Bookstore-Canningvale* during normal office hours. If not participating in the bulk order scheme, please make payments of Voluntary Contributions and Spelling workbooks at the School Office. All payments should be made prior to 15<sup>th</sup> March 2023.

### OTHER ITEMS

These may relate to optional fund-raising activities such as ***Variety Christmas Gift Drive*** or in school fundraising such as ***Crazy hair day***. Participation in the fund-raising aspect of these activities is optional and therefore no amount can be specified.

### CHANGING SCHOOL

Parents are entitled to a refund of any unused portion of the contributions they have paid if their child transfers to another school prior to the end of the school year. This information will be available from the Business Manager Corporate Services.

Thank you for your support  
Yangebup Primary School

10 November 2023

